



**Difi**

Direktoratet for  
forvaltning og ikt

# Digital Tjenesteutvikling

## Vi starter med data

24. april - 2019

—

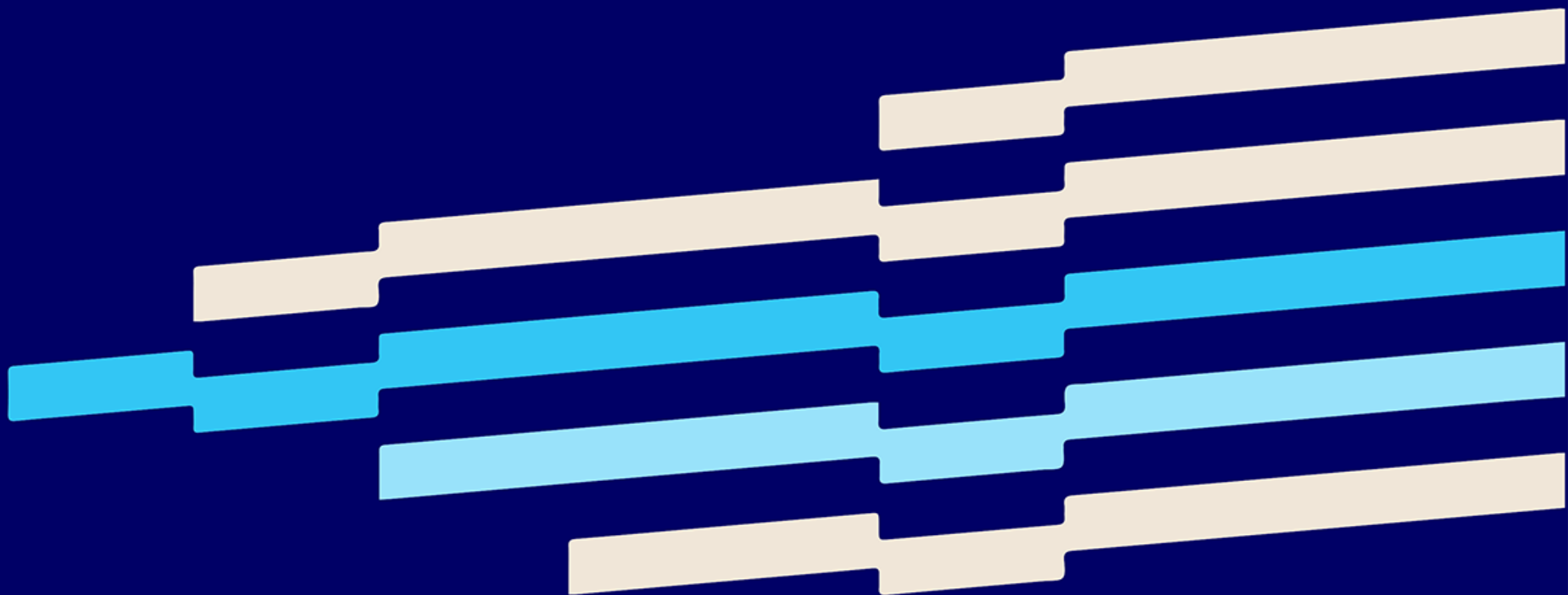
Paul Killie

Seniorrådgiver, Difi

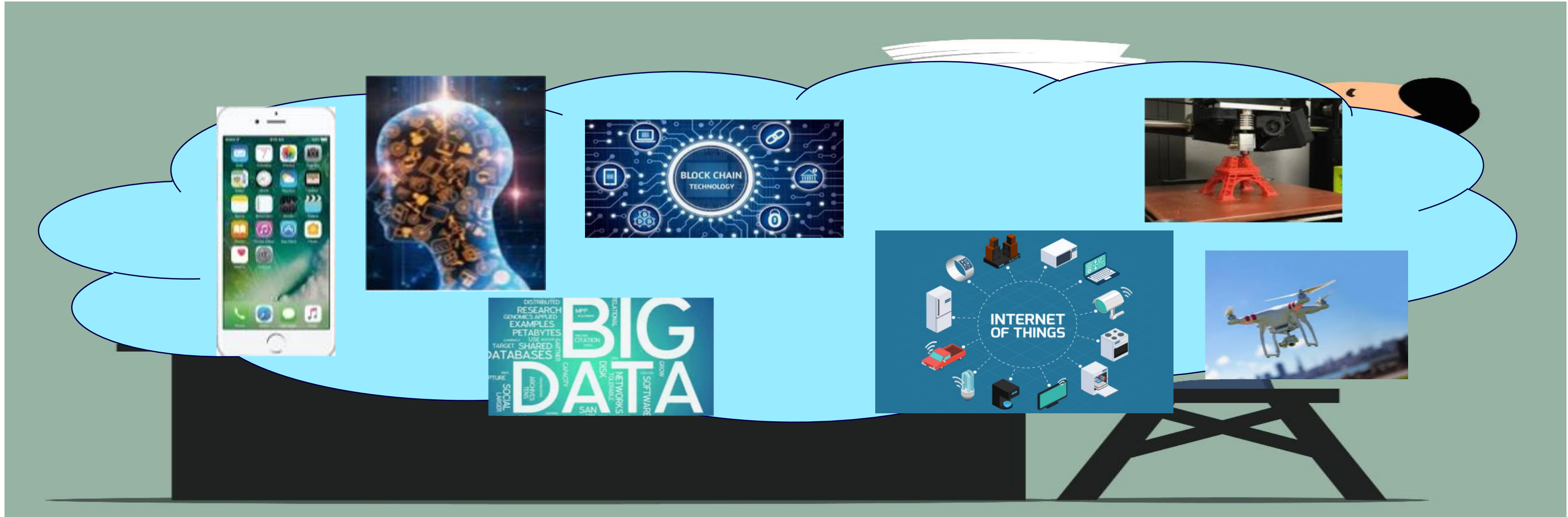
+47 93005769

[pak@difi.no](mailto:pak@difi.no)

[@paulakillie](https://twitter.com/paulakillie)



# Digital Tjenesteutvikling

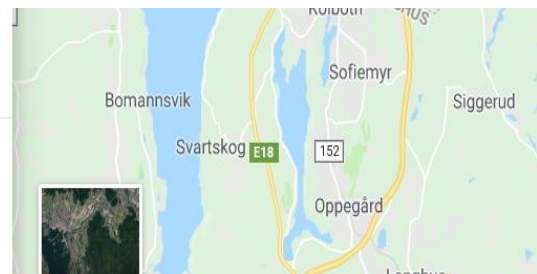


# Kunnskap gir makt

A screenshot of a navigation application interface. On the left, a blue sidebar contains icons for different transport modes (car, bus, walking, bicycle, airplane) and a list of saved destinations: 'Jobb (Rosenholmveien 25 AS)', 'Hjem (Bråtenalléen 21B)', and 'Legg til destinasjon'. Below the sidebar is a 'Dra nå' button and an 'ALTERNATIVER' button. The main area shows a map with a red location pin and a route highlighted in green.

Send veibeskrivelsen til telefonen

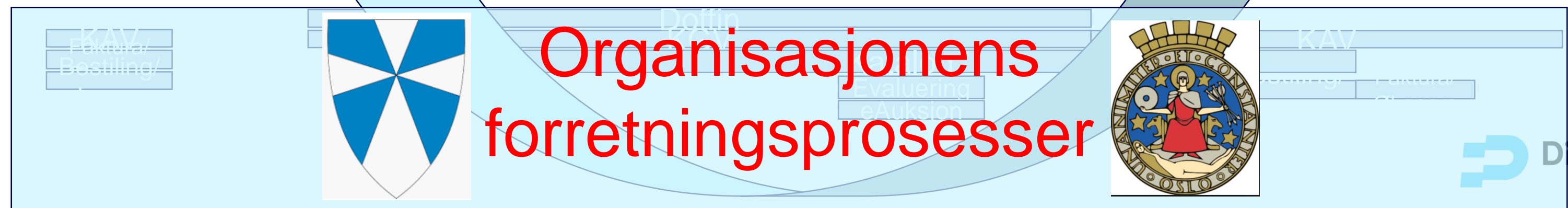
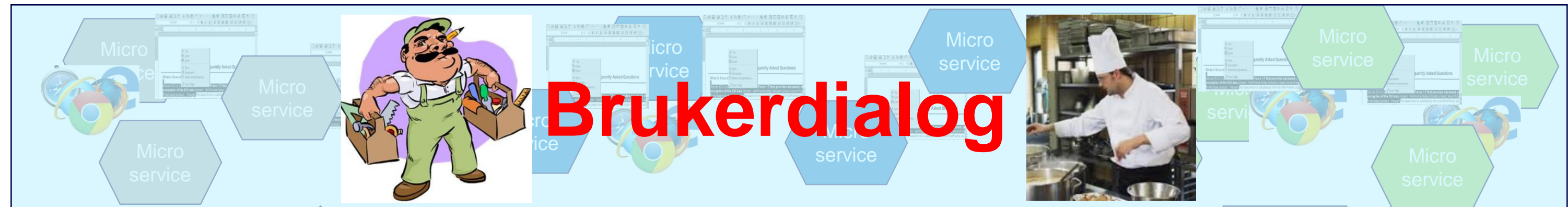
via E6	25 min
Beste rute	21,6 km
⚠ Det kreves bompenger på denne ruten.	
<a href="#">DETALJER</a>	
via E18	24 min
20,1 km	
15:29 - 16:28	59 min
🚶 > 🚗 83 > 🚶 > 🚗 R30x > 🚶	



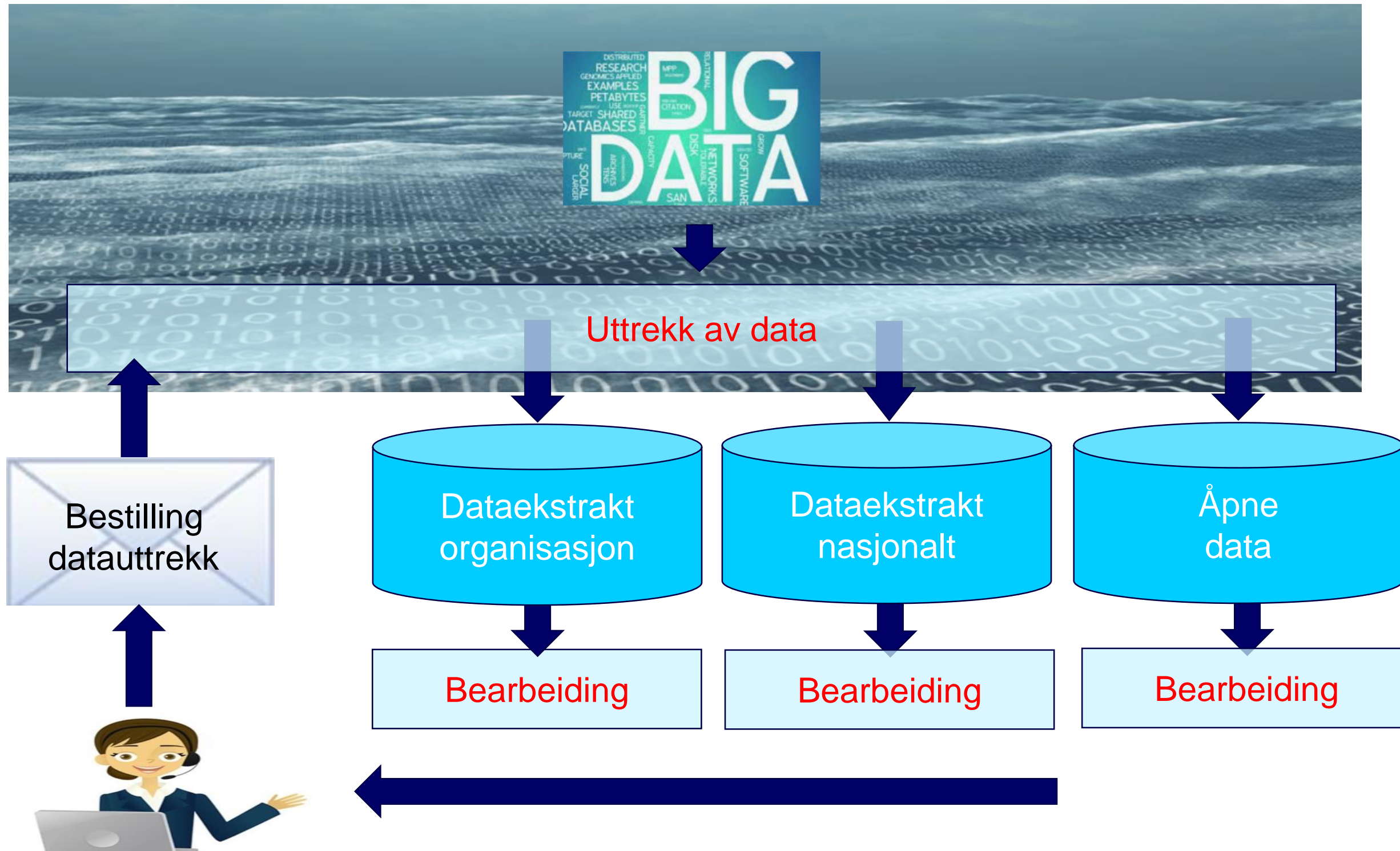
A screenshot of a Facebook post from the page 'digi.no'. The post text reads: 'Kan brukes til å stjele eller slette hele databaser.' Below the text is a photo of a dark blue car. The post has 1 comment and a 'Del' button. The right sidebar shows a 'Gründerklubben' group with 23 151 members and a 'Tesla Model 3 Norge' group with 8 556 members. The bottom of the page shows the 'dre' logo.

amazonbusiness

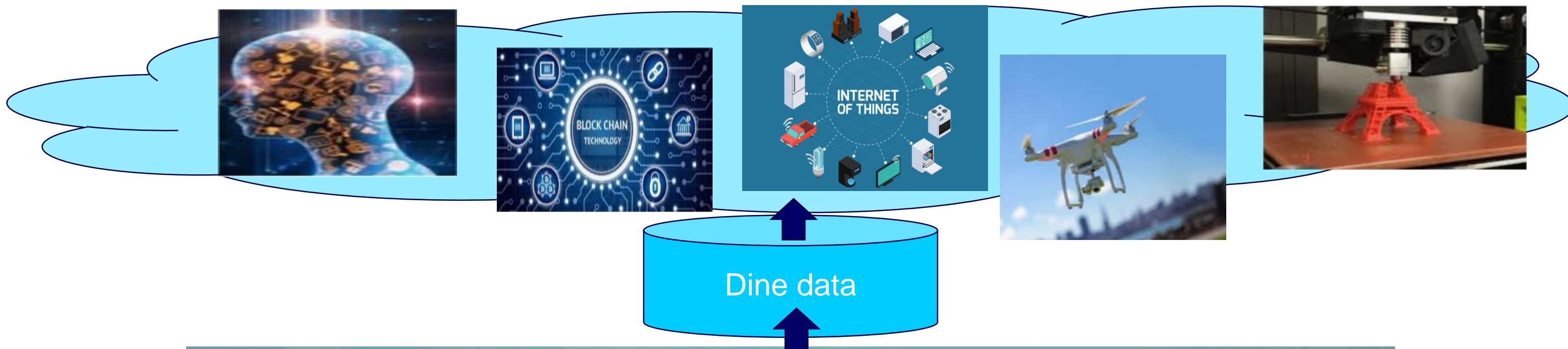
# Dine anskaffelser



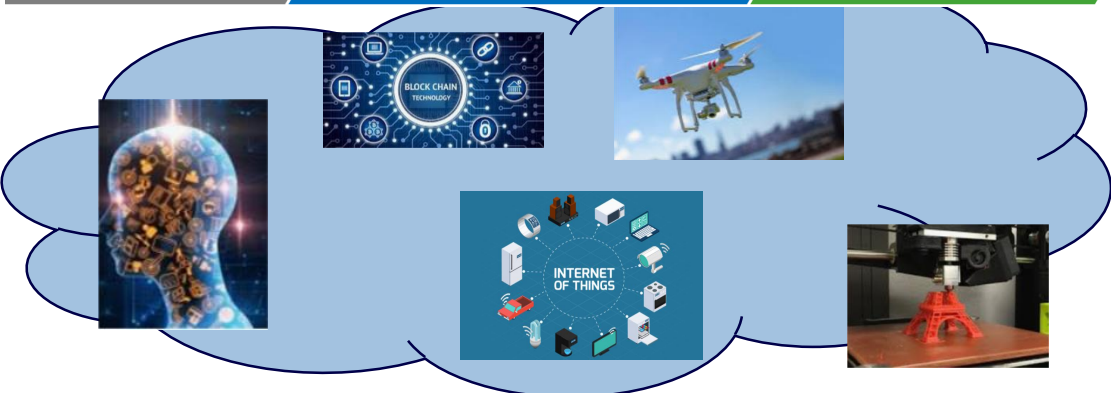
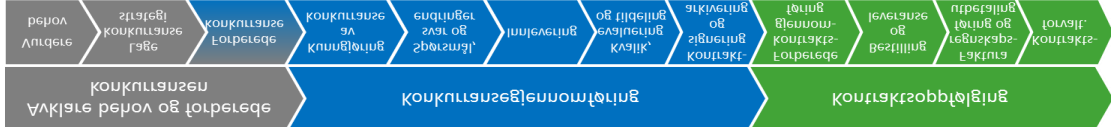
# Big Data for alle



# Dine anskaffelser?



# Hva gjør VI?



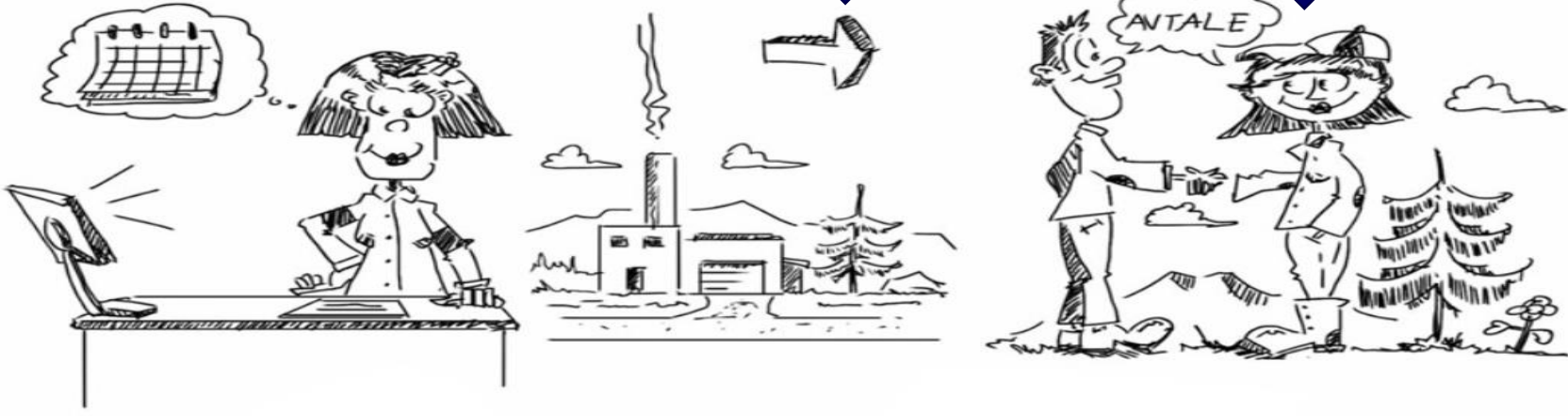
Difi Utvikling



POC1  
POC2

POC3  
POC4

Produksjon





## Rundebord nr. 2

Leverandørpresentasjon i  
morgen kl.10.00 hos Difi

Paul Killie  
Seniorrådgiver, Difi  
+47 93005769  
[pak@difi.no](mailto:pak@difi.no)  
[@paulakillie](#)